

## **Cumberland County Shrine Club Facility Information**

Total capacity is 224 persons

The building is divided by a partition wall

120 person capacity on the Dining Room side of the partition wall

104 person capacity on the Ball Room side of the partition wall

### Available Furniture:

#### Tables

15 each 60 in. plastic round tables

8 each 48 in. plastic round tables

4 each 96 in. x 30 in. plastic rectangular tables

6 each 72 in. x 30 in. plastic rectangular tables

#### Chairs:

150 each plastic folding chairs

XXX each stackable metal chairs with cushioned seat & back

3 each lounge chairs

2 each sofas

### Appliances:

One ice machine (300 lbs/day)

One commercial refrigerator

One commercial range with oven

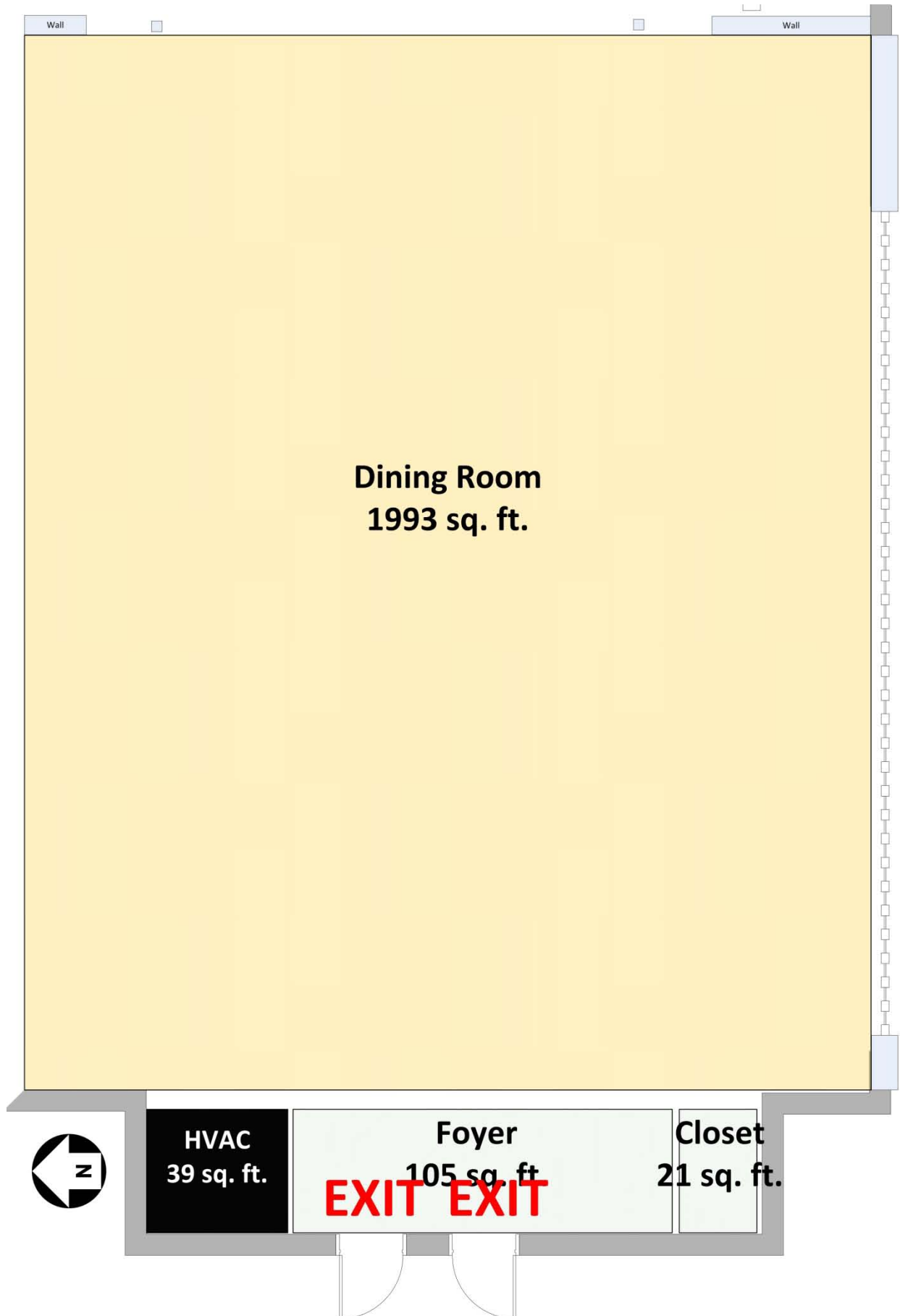
Restrooms are located adjacent to the Lounge and Ball Room.

Handicap parking is at the rear of the building with wheelchair access via the Ball Room exit.

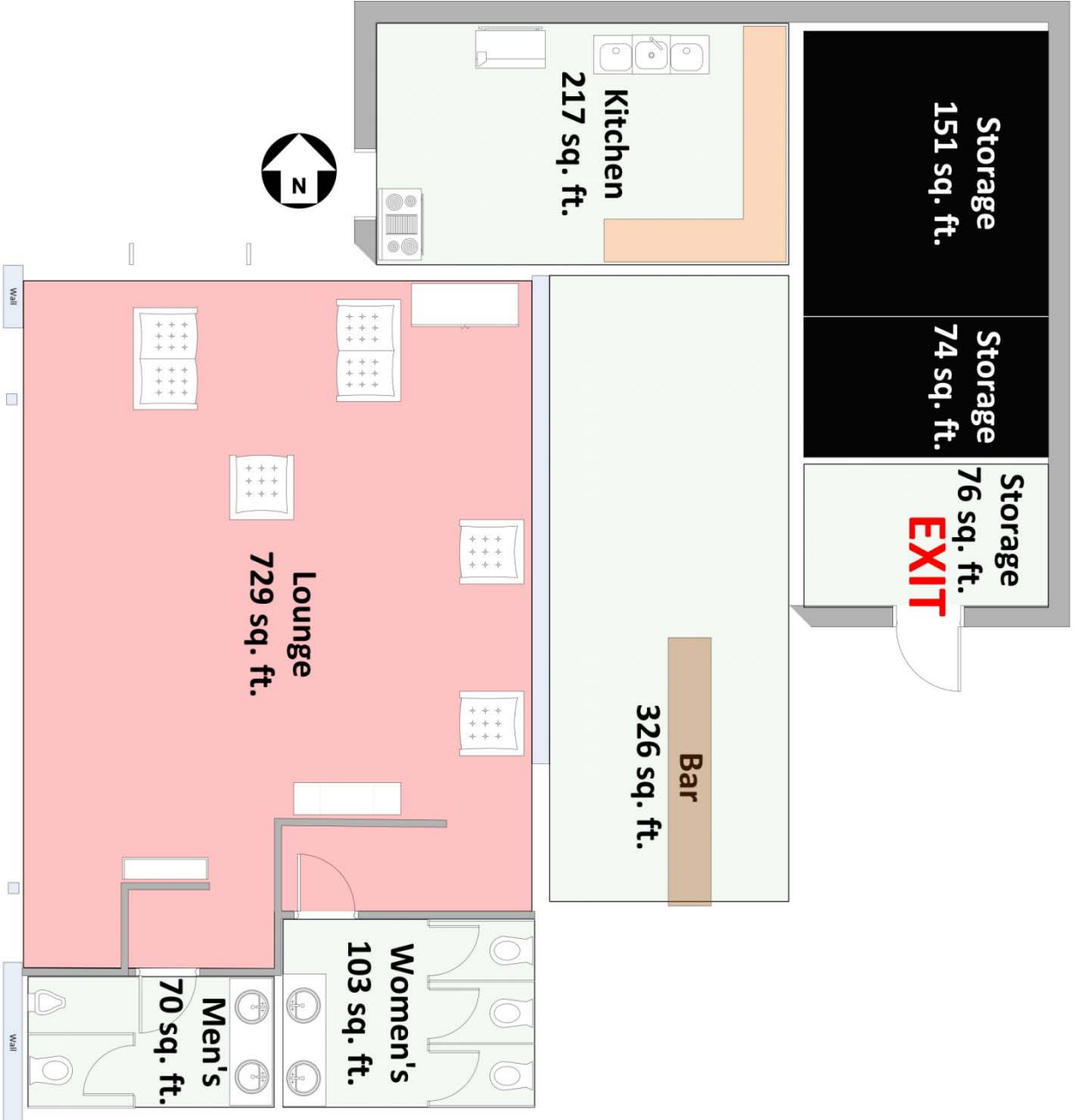
# Cumberland County Shrine Club Facility Information



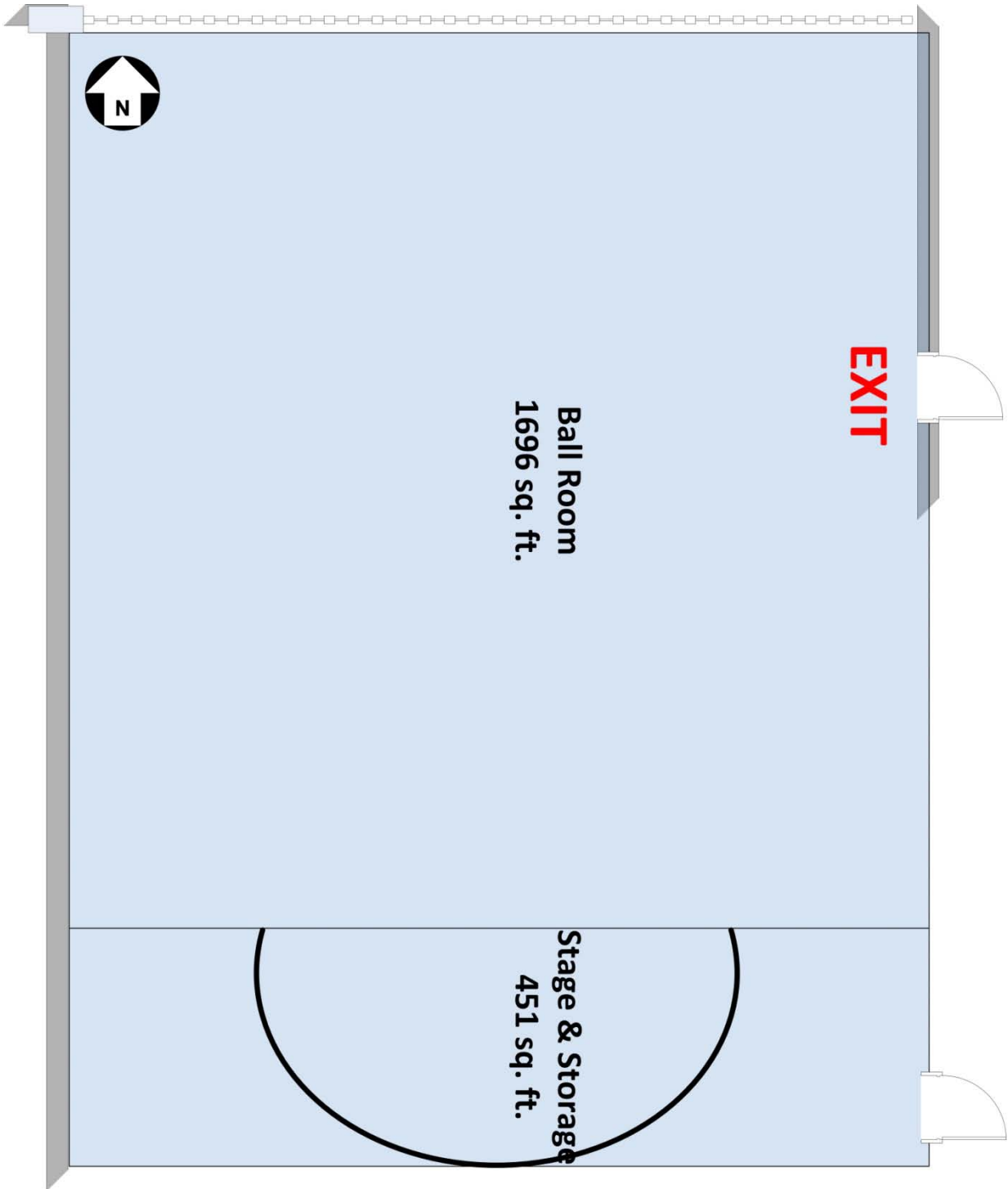
# Cumberland County Shrine Club Facility Information



# Cumberland County Shrine Club Facility Information



# Cumberland County Shrine Club Facility Information



# Cumberland County Shrine Club Facility Information

**EXIT**

